



Stantec Consulting Services Inc.
5555 Airport Highway, Suite 210
Toledo, Ohio
43615
Tel. 419.867.6666
Fax. 419.867.6654
www.stantec.com

Stantec

Copyright Reserved

The Contractor shall verify and be responsible for all dimensions. DO NOT scale the drawing - any errors or omissions shall be reported to Stantec without delay.
The Copyrights to all designs and drawings are the property of Stantec. Reproduction or use for any purpose other than that authorized by Stantec is forbidden.

Consultants

LEGEND:

- R/W = RIGHT OF WAY
- TB = TEST BORING
- STM = STORM
- SAN = SANITARY
- MJ = MECHANICAL JOINT
- FL = FLANGED
- FM = FORCE MAIN
- CB = CATCH BASIN
- CI = CURB INLET
- MH = MANHOLE
- WL = WATERLINE (1" & 2")
- WM = WATERMAIN (6")
- WV = WATER VALVE
- HYD = HYDRANT
- ELEC = ELECTRIC
- BM = BENCH MARK
- E/P = EDGE OF PAVEMENT
- (TBR) = TO BE REMOVED
- (RL) = TO BE RELOCATED BY OTHERS
- (TBRR) = TO BE REMOVED AND REPLACED
- (ATC) = ADJUST TO GRADE
- (TBA) = TO BE ABANDONED

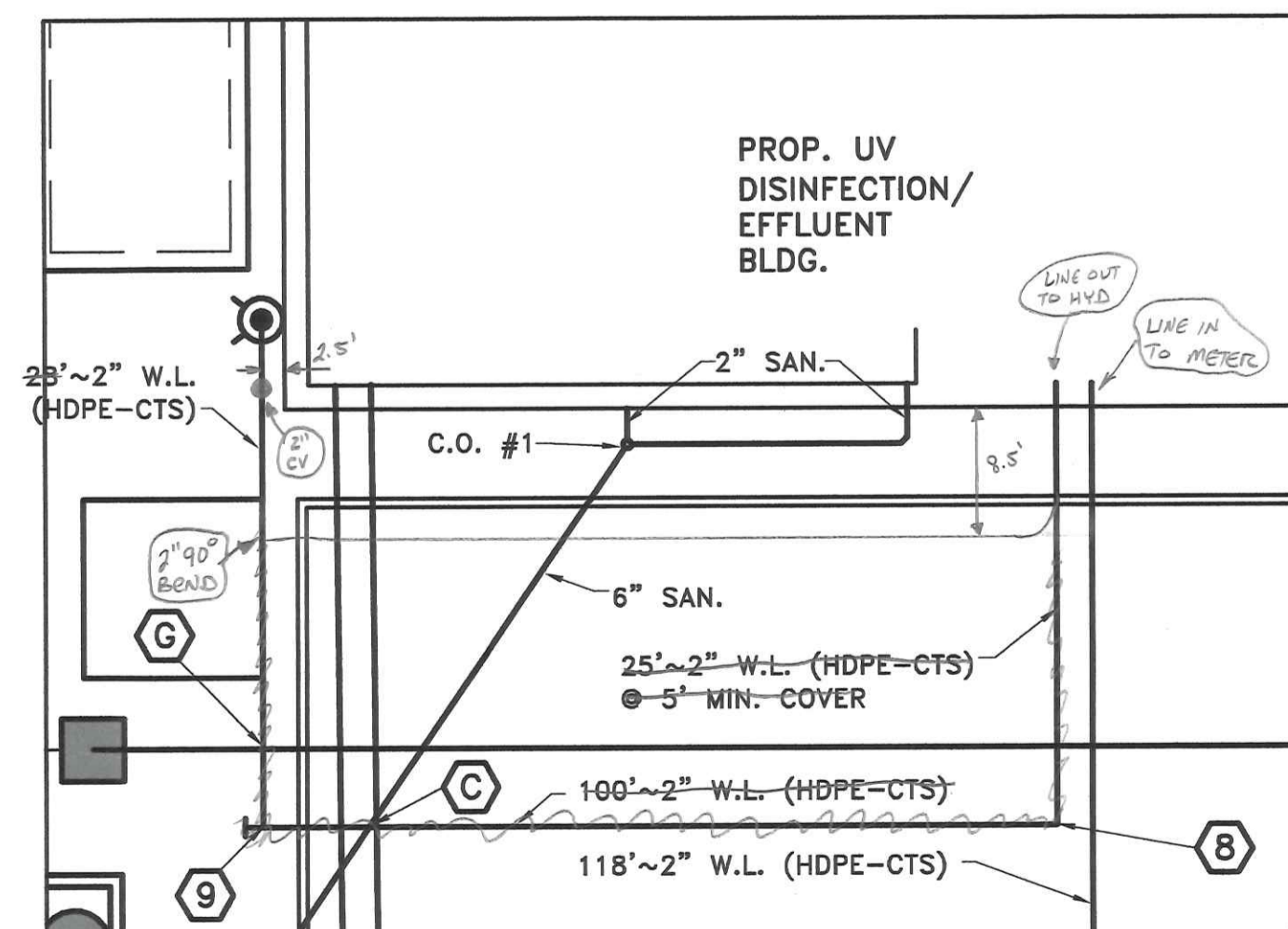
WATER MAIN PIPE & FITTING IDENTIFICATION

- ① 8"x8"x6" TAPPING TEE W/ 6" VALVE & VALVE BOX
RIM = 651.66
INV. 6" = 646.21
INV. 8" = 646.12
TOP 8" W.M. = 649.04
- ② 6" ~ 11 1/2" VERT. BEND
INV. 6" = 646.04
TOP = 648.13
- ③ 6" ~ 45" HORIZ. BEND
INV. 6" = 653.84
TOP = 653.01
- ④ 6"x6"x6" TEE W/ 45" BEND
INV. 6" = 658.60
TOP = 658.17
- ⑤ 6" ~ 45" BEND
INV. 6" = 658.60
- ⑥ STANDARD HYDRANT ASSEMBLY w/ WATCH VALVE & VALVE BOX
PROP. GRD. = 660.29
INV. 6" = 654.50
- ⑦ 6"x6"x2" TEE w/ 2" CURB-STOP & BOX
INV. 2" = 652.30
INV. 6" = 652.20
TOP 6" = 651.72
- ⑧ 2" ~ 90" BEND
INV. 2" = 652.00
- ⑨ 2"x2"x2" TEE WITH PLUG
INV. 2" = 651.00
- ⑩ YARD HYDRANT ASSEMBLY
PROP. GRD. = 660.30
INV. 2" = 655.00
- ⑪ YARD HYDRANT ASSEMBLY
PROP. GRD. = 657.6
INV. 2" = 652.60
- ⑫ 6" ~ 22" BEND
INV. 6" = 651.90
TOP = 650.15
- ⑬ 6" PLUG W/ 2" BLOWOFF
TOP = 649.90
- ⑭ 6"x6"x2" TEE w/ 2" CURB-STOP & BOX

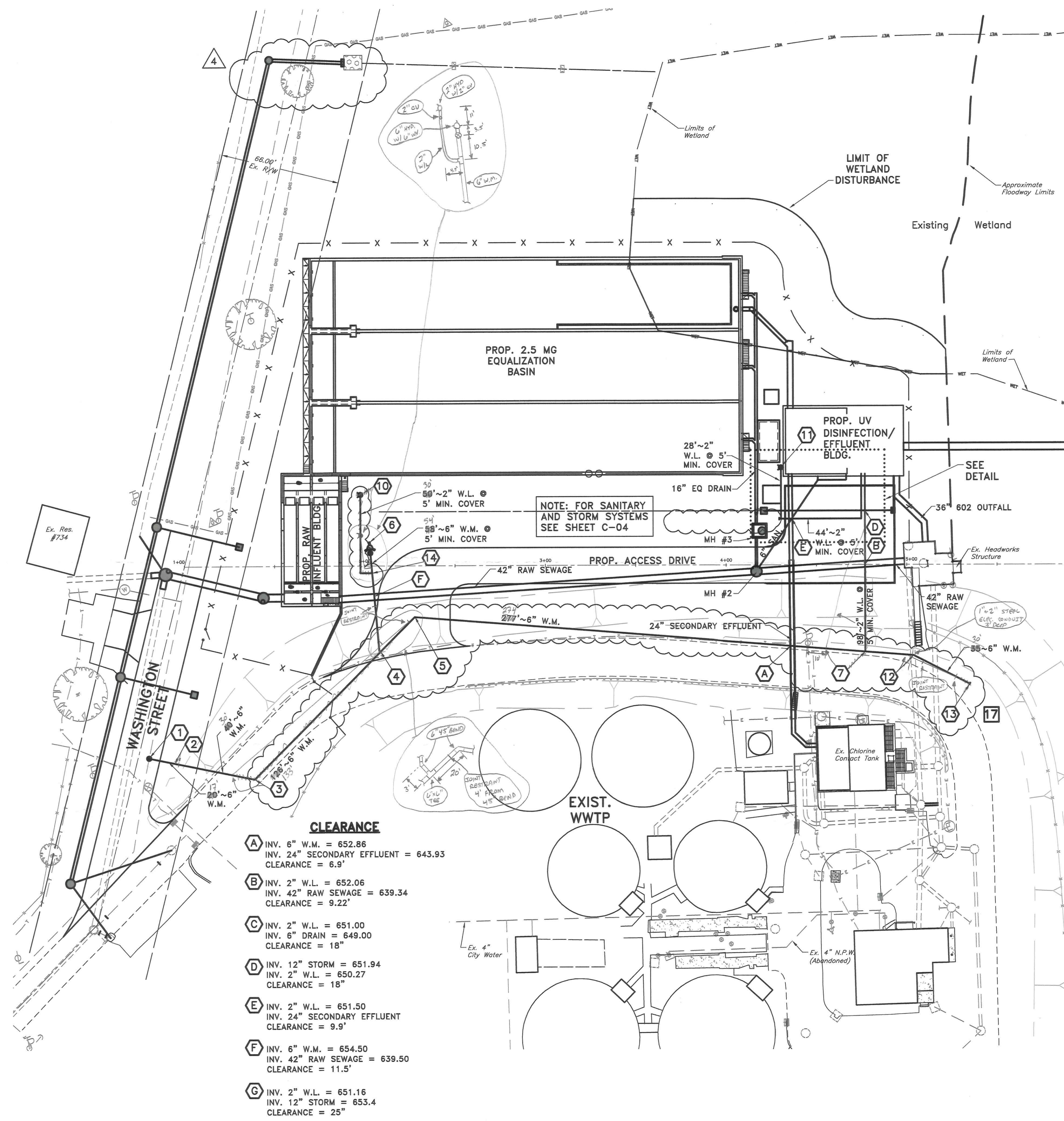
NOTES:
ALL WATERMAIN JOINT DEFLECTIONS ARE WITHIN THE MANUFACTURER'S RECOMMENDED MAXIMUM ANGLE.

** CONTRACTOR TO FIELD VERIFY SIZE AND DEPTH OF EXISTING W.M. & W.L. PRIOR TO ORDERING MATERIALS

ALL FITTINGS SHALL BE MECHANICAL JOINT TYPE.



DETAIL
N.T.S.



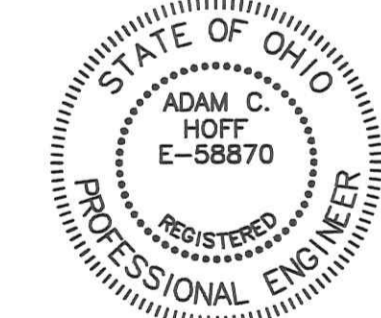
CLEARANCE

- A INV. 6" W.M. = 652.86
INV. 24" SECONDARY EFFLUENT = 643.93
CLEARANCE = 6.9'
- B INV. 2" W.L. = 652.06
INV. 42" RAW SEWAGE = 639.34
CLEARANCE = 9.22'
- C INV. 2" W.L. = 651.00
INV. 6" DRAIN = 649.00
CLEARANCE = 18"
- D INV. 12" STORM = 651.94
INV. 2" W.L. = 650.27
CLEARANCE = 18"
- E INV. 2" W.L. = 651.50
INV. 24" SECONDARY EFFLUENT
CLEARANCE = 9.9'
- F INV. 6" W.M. = 654.50
INV. 42" RAW SEWAGE = 639.50
CLEARANCE = 11.5'
- G INV. 2" W.L. = 651.16
INV. 12" STORM = 653.4
CLEARANCE = 25"

| | | |
|-----------------------|-----|----------------|
| SITE INSTRUCTION 17 | KAH | 10-03-16 |
| ADDENDUM NO. 4 | KAH | 08-08-29 |
| Revision | By | Appd. YY.MM.DD |
| 100 PERCENT SUBMITTAL | KAH | 08-07-11 |
| P.T.I. SUBMITTAL | KAH | 08-05-16 |
| 75 PERCENT SUBMITTAL | KAH | 08-04-11 |
| 50 PERCENT SUBMITTAL | KAH | 08-02-20 |
| Issued | By | Appd. YY.MM.DD |

File Name: C-14 CWJ ACH KAH 08-02-20
Dwn. Chkd. Dsgn. YY.MM.DD

Permit-Seal



Client/Project
CITY OF NAPOLEON
LTCP PROJECT 14
WASTEWATER TREATMENT PLANT
2.5 MG EQUALIZATION BASIN
& ASSOCIATED FACILITIES

Title
WATERMAIN SITE PLAN
735 E. Washington St.

Project No. 174701023 Scale 0 15 30 FEET
Drawing No. Sheet Revision

WWTP 60 BASIN WATERLINE CONSTRUCTION INSPECTOR'S COPY